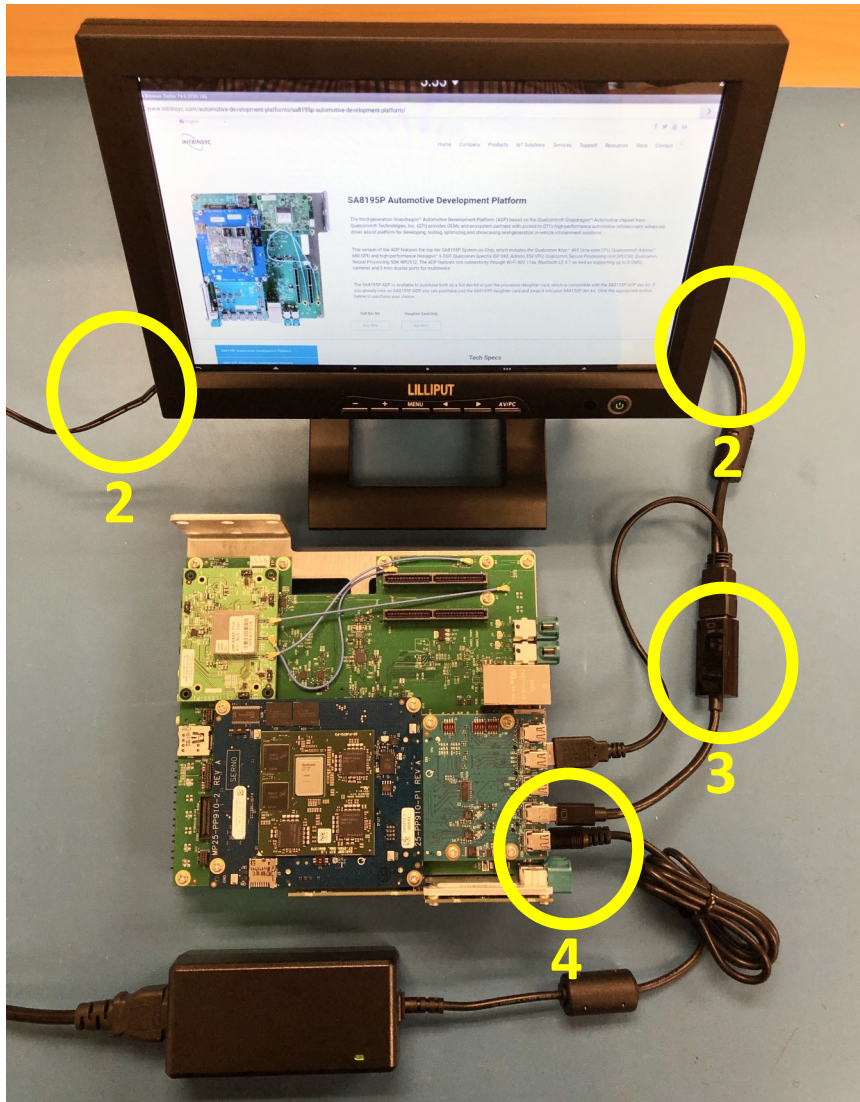


Snapdragon™ SA8195P Automotive Development Platform Quick Start Guide



Setup

1. Remove the ADP carefully from the anti static bag
2. Connect to the display: the power adapter and the display HDMI cable
3. Connect the display HDMI cable to the HDMI/mini DisplayPort adapter and then to DSI0 of the peripheral board; as well as the USB cable to the USB A connector
4. Connect the 12 V power supply to J1 of the peripheral board; the ADP will boot automatically in Android

To get more details on your ADP platform consult the User Guide

Support

To access the documentation & software updates, register at

<http://tech.intrinsyc.com>

Should you require information or assistance please contact us at

<https://helpdesk.intrinsyc.com>

Thank you for purchasing the SA8195P Automotive Development Platform